

Exam Preparations

CT

CT of Sinuses - NO PREP

CT of Spine - NO PREP

Other CT - Drink plenty of water, but no solids
for 3 hours prior to your exam time.

MRI

- Remove jewelry, eye make-up
- Select loose clothing with no metal
- Sports bras without metal can be worn

US

ABD U/S - Nothing to eat or drink 8 hours prior to study
- no smoking or gum chewing

Pelvic U/S & OB U/S - Drink 32 oz. (1 quart) of water
at least a full hour before study
- Do not urinate

Renals U/S - Drink 20 oz. water a full hour before
the study

NUC

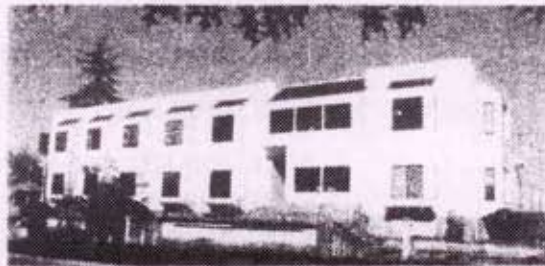
HIDA - Nothing to eat or drink 4 hours prior to exam

Thyroid Uptake - Nothing to eat or drink 4 hours prior
to exam - off thyroid meds for 6 weeks

Bone Scan - NO PREP

ⓘ **NOTE: PLEASE BRING THIS FORM & INSURANCE CARD WITH YOU TO YOUR EXAM**

Mission Medical Imaging



1155 Mission Street SE • Salem, OR 97302

We are located three miles from Exit 253 off I-5 at the corner of 12th and Mission Street,
across the street from "Deepwood House"
Parking is available in back

